

CITY OF MURRAY CONTROL MONUMENT CARD

DESIGNATION: BM F5 C

TYPE: CONCRETE MONUMENT W/ CITY DISK

DATE SET: JUNE 2002 QUAD: HICO, KY.

HORIZONTAL DATUM: NAD-83 VERTICAL DATUM: NAVD-88

STATE: KENTUCKY COUNTY: CALLOWAY ZONE: KY. S 1602

NORTHING: 1759298.52 FT

EASTING: 910292.88 FT

ELEVATION: 541.04 FT (GPS)

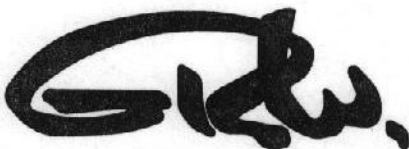
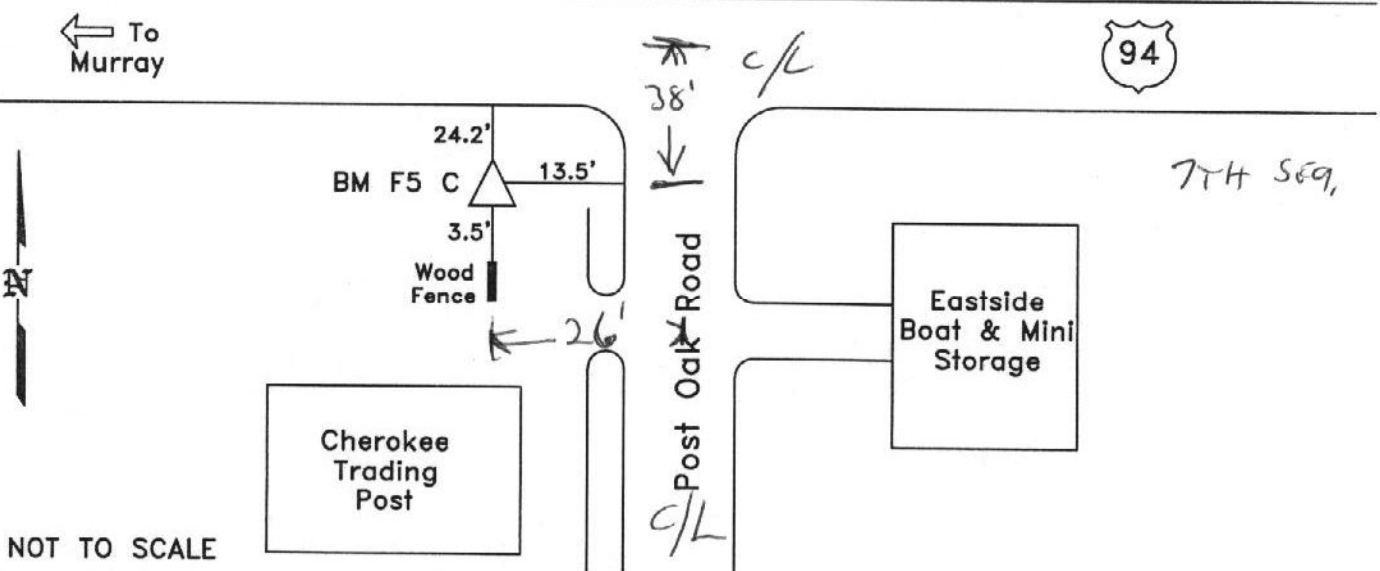
LATITUDE: N $36^{\circ}38'00.38744''$ LONGITUDE: W $088^{\circ}14'18.56967''$

SCALE:

CONVERGENCE:

PLANE AZI. TO AZI. MARK:

To Reach: Located at the intersection of State Route 94 and Post Oak Road.



GRW Aerial Surveys, Inc.
801 Corporate Dr. Lexington Ky. 40503
(859)223-3999